

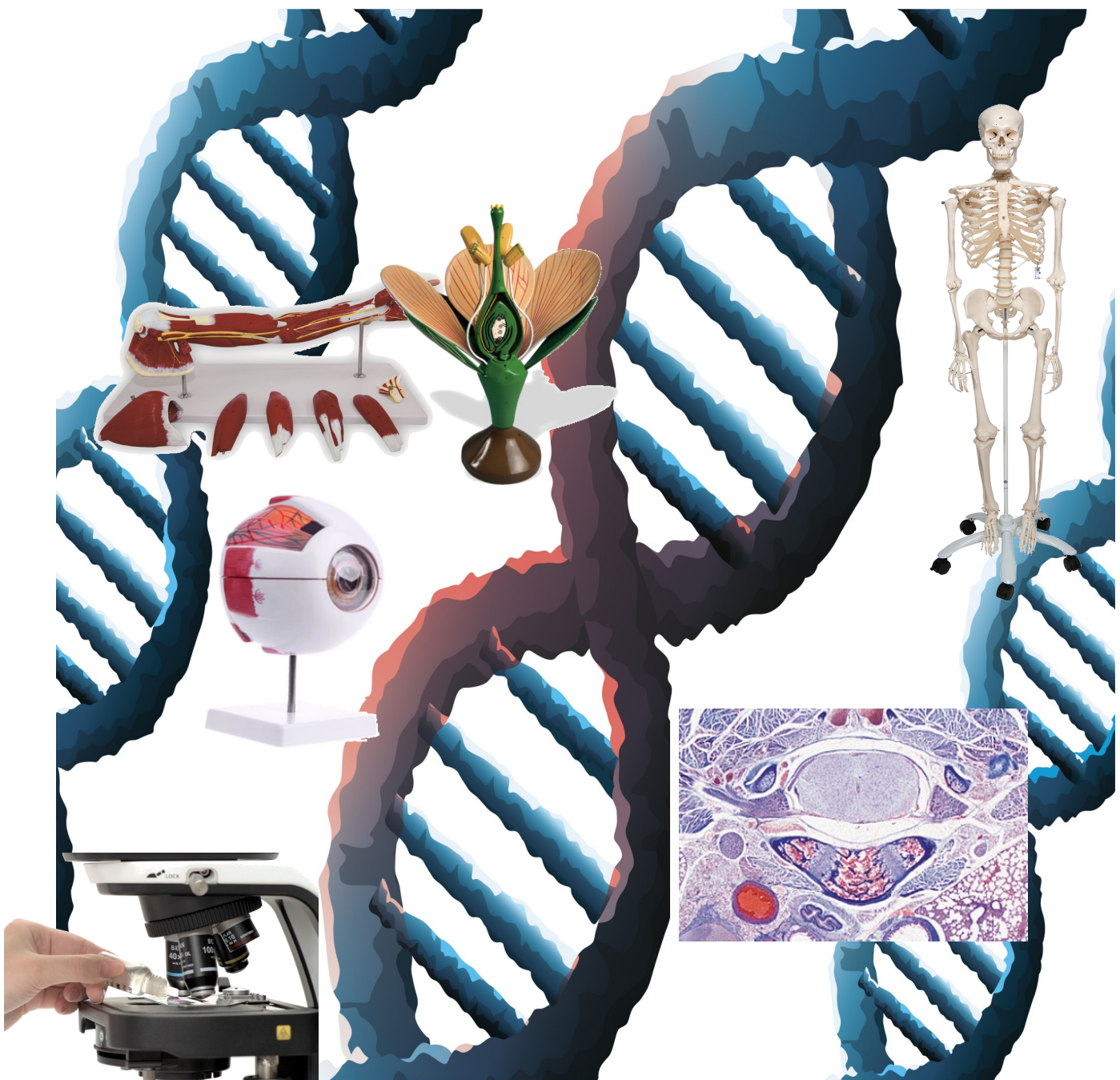
# B1 CATALOGUE

# Biology



## BIOLOGY LABORATORY EQUIPMENT

The B1 catalogue includes equipment and devices that are used generally in Biology science laboratories.



ITEM NUMBER	DESCRIPTION	PAGE
<b>BIOLOGY LAB EQUIPMENT</b>		
1	STETHOSCOPE	P.4
2	SPHYGMOMANOMETER	P.4
3	ABO BLOOD TYPING KIT	P.4
4	CLINOSTAT	P.4
<b>MODEL AND POSTERS</b>		
1	ANIMAL CELL ANATOMY MODEL	P.5
2	PLANT CELL ANATOMY MODEL	P.5
3	HUMAN TORSO ANATOMY MODEL	P.6
4	HUMAN FEMALE PELVIS-40 WEEK PREGNANCY ANATOMY MODEL	P.6
5	HUMAN MALE PELVIS ANATOMY MODEL	P.6
6	PERIOD OF GESTATION ANATOMY MODEL	P.7
7	LIFE CYCLE OF BUTTERFLY	P.7
8	LIFE CYCLE OF A FROG	P.7
9	FLOWER ANATOMY MODEL	P.7
10	FLOWER CROSS SECTION ANATOMY MODEL	P.8
11	FLOWER ANATOMY MODEL	P.8
12	SEED GERMINATION ANATOMY MODEL	P.8
13	HUMAN BRAIN ANATOMY MODEL	P.9
14	HUMAN EAR ANATOMY MODEL	P.9
15	HUMAN EAR ANATOMY CHART	P.9
16	HUMAN SKIN ANATOMY MODEL	P.9
17	DIGESTIVE SYSTEM ANATOMY MODEL	P.10
18	DENTAL CARE ANATOMY MODEL	P.10
19	GASTROINTESTINAL SYSTEM ANATOMY CHART	P.10
20	CIRCULATORY SYSTEM ANATOMY MODEL	P.10
21	HUMAN HEART ANATOMY MODEL	P.11
22	VEIN AND ARTERY ANATOMY MODEL	P.11
23	HUMAN HEART ANATOMY CHART	P.11
24	RESPIRATORY SYSTEM ANATOMY MODEL	P.11
25	URINARY SYSTEM ANATOMY MODEL	P.12
26	URINARY SYSTEM ANATOMY CHART	P.12
27	KIDNEY ANATOMY MODEL	P.12
28	HUMAN SKELETON ANATOMY MODEL	P.12
29	HUMAN SKULL	P.13
30	ANATOMICAL ARM MUSCLES	P.13
31	MITOSIS MODELS	P.13
32	MEIOSIS MODELS	P.13
33	DNA MODEL	P.14
34	MEIOSIS CHART	P.14

ITEM NUMBER	DESCRIPTION	PAGE
35	MITOSIS CHART	P.14
36	HUMAN EYE ANATOMY CHART	P.14
37	LEAF CROSS - SECTION MODEL	P.14
38	ROOT PLANT CROSS - SECTION MODEL	P.15
39	STEM CROSS - SECTION MODEL	P.15
40	HUMAN EYE MODEL	P.15
41	BACTERIA CHART	P.15
42	ENDOCRINE SYSTEM CHART	P.16
43	NERVOUS SYSTEM ANATOMY MODEL	P.16
<b>MICROSCOPES</b>		
1	BTD BINOCULAR STEREO LABORATORY MICROSCOPE	P.17
2	LABORATORY MICROSCOPE	P.18
3	BINOCULAR LABORATORY MICROSCOPE	P.19
4	TRINOCULAR LABORATORY MICROSCOPE	P.20
5	LCD DIGITAL MICROSCOPE	P.21
6	MICROSCOPE ACCESSORIES	P.22
7	MICROSCOPE CAMERA	P.22
8	MICROSCOPE CAMERA	P.22
9	DISSECTING SET	P.23
10	PLANT ANATOMY MICROSCOPE PREPARED SLIDES	P.23
11	NERVOUS SYSTEM MICROSCOPE SLIDES	P.23
12	HUMAN HISTOLOGY MICROSCOPE PREPARED SLIDES	P.24
13	MITOSIS AND MEIOSIS SLIDE SET	P.25
14	SINGLE-CELLED ORGANISMS SLIDE SET	P.25
15	CAVITY SLIDES	P.25
16	MICROSCOPE SLIDE PACK	P.25
17	COVER GLASSES MICROSCOPE AUXILIARIES	P.26
18	DISSECTION NEEDLE	P.26
19	SCISSORS	P.26
20	GERMINATION CABINET	P.26

**BT4003.4 STETHOSCOPE**

Flat chest stethoscope

Zinc Alloy Chest Piece With Nickel-plated Silver surface finish , binaural tube with ear plugs Appropriate for medical use.



**BT4003.5 SPHYGMOMANOMETER**

Custom design manual aneroid Sphygmomanometer with manometer, arm cuff and stethoscope.

Specification	Gauge	Zinc alloy
	Cuff	Cotton,54*14.5cm
	Bulb	Latex
	Bladder	Latex,22*12cm
	Measure scope	0-300mmH
	Accuracy	+/-3mmHg
	Sub-division	2mmHg
	Valve	Air-release valve with spring End valve



**BT4003.6 ABO BLOOD TYPING KIT**

Determination of blood groups and Rhesus factor.

Includes:

4 different samples of Artificial "blood" .

Determination of red and white blood cells using microscope

4 dropper bottles of artificial blood (A, B, AB and O)

1 dropper bottle each of artificial anti-A, anti-B and anti-Rh serum

Washable test trays

Mixing sticks

Materials sufficient for approximately 50 samples



**BT4003.7 CLINOSTAT**

This premium quality motorized clinostat is an essential tool for the study of heliotropism and geotropism.

The seedlings are pinned to the cork table which is rotated by an electric motor. The disc is held vertically and the motor rotates it slowly at rates in the order of one revolution per minute. A plant is attached to the disc so that it is held horizontally. The Clinostat is supplied with a 70mm diameter cork lined/faced disc with a fitting to take a specimen tube. The angle is adjustable by a thumb screw with a clear plastic cover.



### BT4003.9 ANIMAL CELL ANATOMY MODEL

A colorful realistic **sectioned in 4 pieces** relief representation of an animal cell structure at a scale of magnification x 10,000

The model, includes organelles as:

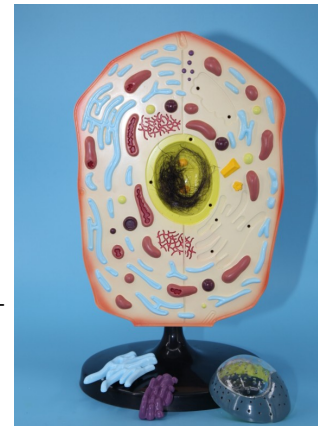
the nuclear membrane

- cell wall,
- nucleus centrosome
- lysosome
- mitochondrions
- cytoplasm golgis etc.

The cell walls are detailed outside showing the relationship to the adjacent cells. All organelles of the plant cell are in raised relief in color

It is mounted on a base.

Size: 30x20x50 cm



### BT4003.10 PLANT CELL ANATOMY MODEL

A colorful realistic **sectioned in 4 pieces** relief representation of plant cell structure at a scale of magnification x 10,000.

The first part of the model represents the following organelles:

- the nuclear
- membrane
- cell wall
- chromosomes
- endoplasmic reticulum
- chloroplast
- large central vacuole
- mitochondria golgis
- ribosomes

The cell walls are detailed outside showing the relationship to the adjacent cells. All organelles of the plant cell are in raised relief in color.

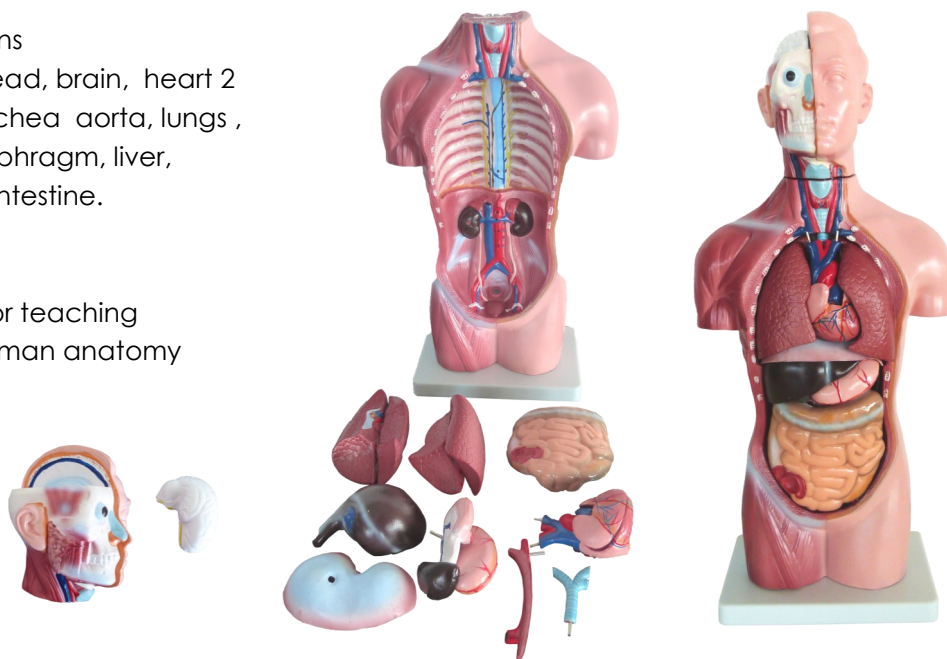
Size: 30x20x50 cm



**BT 4003.3 HUMAN TORSO ANATOMY MODEL**

- Torso with internal organs
- 13 Removable parts: head, brain, heart 2 pieces, esophagus, trachea aorta, lungs , skull cap, stomach, diaphragm, liver, pancreas, spleen and intestine.
- Height: 80 cm

The model is intended for teaching students of biology or human anatomy classes.



**BT4003.11 HUMAN FEMALE PELVIS–40 Week pregnancy ANATOMY MODEL**

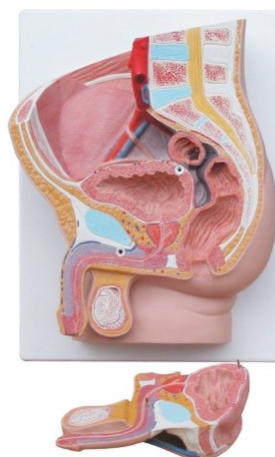
Human Female Pelvis Section Anatomy model. Its median section shows the female pelvis during the 40th week of pregnancy with a removable fetus. Demonstrates in 4 parts the, normal position of child before birth, female genital organs, human reproductive and urinary systems. An uterus with embryo in 3rd month of pregnancy is mounted on base for study.



**BT4003.12 HUMAN MALE PELVIS ANATOMY MODEL**

Median section

This median section model shows the normal position of male genital organs with bladder and rectum in the male pelvis. Dissectible into 2 parts. Size 40x55x37cm.



**BT4003.13** PERIOD OF GESTATION ANATOMY MODEL

Human Embryo Fetus Development Period of Gestation Model for teaching Medical Anatomical.

Includes 8 uterus models to show the development of embryo and fetus.

1) 1st month embryo; 2) 2nd month embryo; 3) 3rd month embryo; 4) 4th month fetus ( transverse position); 5) 5th month fetus (breech position); 6) 5th month fetus (transverse position); 7) 5th month twin fetus ( normal position ); 8) 7th month fetus ( normal position).

Embryo and fetus are removable.

Each on stand.

Size: 12x12x15cm



**BT4003.14** LIFE CYCLE OF BUTTERFLY

The Life Cycle of Real Butterfly. Five stages of butterfly life cycle permanently embedded in a transparent polymer resin.



**BT4003.15** LIFE CYCLE OF A FROG

The Life Cycle of Frog. Eight stages of frog life cycle permanently embedded in a transparent polymer resin.



**BT4003.16** FLOWER ANATOMY MODEL

- Magnification : 5x
- Shows: flower petals, sepals, stamens
- Consists of removable parts
- Placed on plastic base
- Dimensions: 30 cm height

The pollination of the angiosperms can be taught on this dicotyledonous flower model of an idealized flower with, torus, ovary, and style.

2 anthers and the ovary are cut partly to show the inner structures of the dicotyledonous flower. 6 pollen grains that are mounted on the style can be easily identified.



**BT4003.17** FLOWER CROSS SECTION ANATOMY MODEL

- Demonstrate the parts of a flower in plant science lessons with this durable foam tulip model. One half of cross-section is labeled with part names (stamen, petal, pistil, sepal, stem, leaf and roots); other half is labeled with letters for assessment activities.
- Dimensions: 25x20x30 cm



**BT4003.18** FLOWER ANATOMY MODEL

Pollination & Fertilization Model that shows a vertical section through the stigma, style and ovary, showing the growth of the pollen tubes to the ovules. Smaller separate models show anther, anther dehiscing, and different types of ovary in transverse and longitudinal sections. Dimension: 50cm x 33cm



**BT4003.19** SEED GERMINATION ANATOMY MODEL

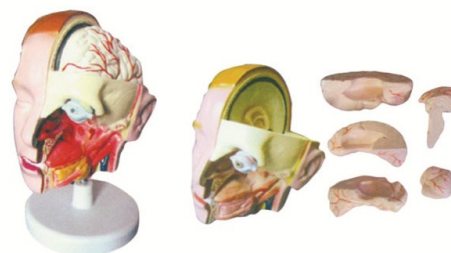
Bean Germination and Growth Process Embedded in Specimen of 6 stages. Dimension: 16\*7.8\*2cm Material: crystal resin





**BT4003.21 HUMAN BRAIN ANATOMY MODEL**

High quality Human medical Head Brain model of 6 parts.  
Material: PVC  
Size: Natural size



**BT4003.1 HUMAN EAR ANATOMY MODEL**

Ear Anatomy Model representation of the outer, middle, and inner ear 3 times enlarged. All parts are removable  
Material: PVC  
Made of PVC plastic, based on plastic support

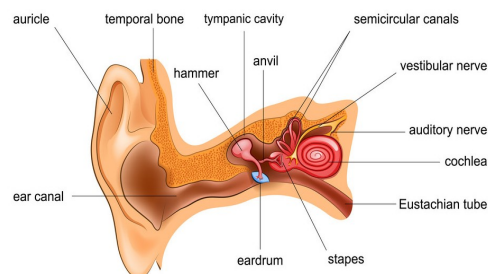


**BT4003.1A HUMAN EAR ANATOMY CHART**

The ear anatomy chart features a prominent view of the acoustic system of humans showing major internal and external features of this basic human system.

It is made durable varnished paper . The chart has 2 wooden bars for wall hanging .

Chart size: 46 cm by H 32 cm



**BT4003.22 HUMAN SKIN ANATOMY MODEL**

Medical education model of skin anatomy 50 times enlarged

Dim: 50times ,25x15x11 cm,

Material : High quality PVC,



**BT4003.23 DIGESTIVE SYSTEM ANATOMY MODEL**

- Human Life-size
- Removable parts
- Dimensions: 88x35x10 cm

Life-size human digestive system model that demonstrates the entire digestive system in graphic relief , in median section ,dissectible into 3 parts.

The model features the **oral cavity, pharynx, esophagus, stomach, liver with gall bladder, pancreas, GI tract** and **spleen**. This model is designed as a visual leaning aid for anatomy and physiology courses. Mounted on baseboard.



**BT4003.24 DENTAL CARE ANATOMY MODEL**

- Shows: tongue, teeth, upper jaw, lower jaw
- Magnification scale : 5:1
- 28 teeth
- Tooth brush included

The top and bottom are connected with flexible stainless steel tubes to create life-like movements. Max opening 100 degrees. Includes a toothbrush to demonstrate proper brushing motions.

The model is intended for teaching students of biology or anatomy classes .

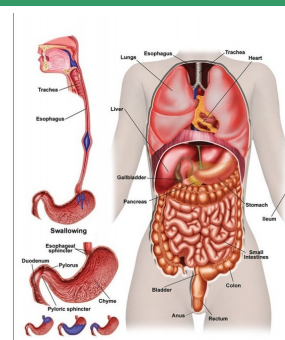


**BT4003.25A GASTROINTESTINAL SYSTEM ANATOMY CHART**

Laminated chart of the Human Gastrointestinal System

Dimensions: 50x70 cm

Printed at any language requested

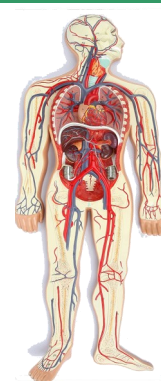


**BT4003.26 CIRCULATORY SYSTEM ANATOMY MODEL**

1/2 life size relief model of the human circulatory system details the following anatomical structures: the arterial/ venous system; heart; lung; liver; spleen; kidneys; partial skeleton.

A colorful and anatomically accurate teaching aid of the human circulatory system.

Dimensions: 30x80x5 cm



**BT4003.27 HUMAN HEART ANATOMY MODEL**

Human heart anatomy model , scale 1 :1 , in 3 section parts, showing the normal morphological structure of the heart, veins and the valvular structures. It is standing on a plastic base with metal axis.



The model is 1: 1 scale model of the adult heart, showing a dilated state, positioned on the normal physiological position on the stent.

A transverse cut along the pulmonary artery root, is showing the internal structure of the left and right atria and pulmonary artery showing the pulse semilunar valve.  
A diagonal cut along the atrium, is showing the internal structure of the left ventricle.

The Right atrium is showing on the inferior vena cava, inferior vena cava valve, coronary sinus ostium, ovarian fossa and right atrioventricular orifice. The right atrial is showing the left and right pulmonary vein ostium and the left atrioventricular orifice.

**BT4003.28 VEIN AND ARTERY ANATOMY MODEL**

The artery and vein model shows a medium-sized muscular artery, made of high quality PVC, with two adjacent veins from the ante-brachial area with adjoining fat tissue and muscle enlarged 14 times, the microanatomy circulatory system model illustrates the reciprocal anatomical.

Visible layers of the wall structure in a cross and longitudinal section

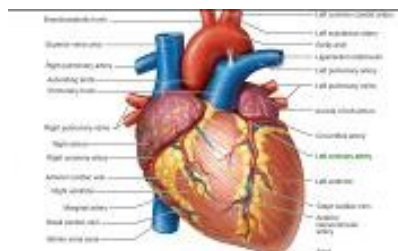


**BT4003.27A HUMAN HEART ANATOMY CHART**

Laminated Human Heart Chart

Dimensions: 50x70 cm

Language as requested



**BT4003.29 RESPIRATORY SYSTEM ANATOMY MODEL**

Shows: Larynx and lungs

Consists of **7 parts**

Dimensions: 10x30x40 cm

This model is designed as a visual leaning aid for anatomy and physiology courses.

This is a model of the anatomy of the respiratory system . The larynx bisects in 2 pcs.

The lungs bisect in 2 pcs.

The lung model with larynx is standing on a PVC base-board for convenient display in a classroom .



**BT4003.30 URINARY SYSTEM ANATOMY MODEL**

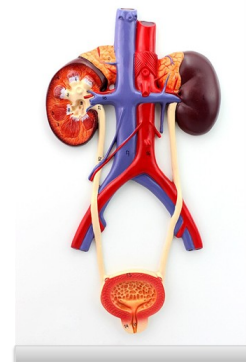
Male/Female—Urinary anatomy

Model is situated on a plastic stand.

Life-size human urinary system representing the kidneys and their internal structure , ureters , bladder and its internal structure , urethra .Both blood vessels , Renal Artery ( in red color) and Renal Vein (blue color ) are clearly visible as well as some of their capillaries in the kidney vessels.

This model is designed as a visual leaning aid for anatomy and physiology courses. Model map printout , plasticized, included.

The model does not include the genital organs of female or male related to the urethra.

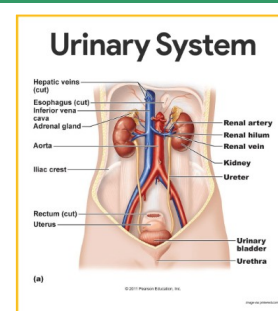


**BT4003.30A URINARY SYSTEM ANATOMY CHART**

Laminated Urinary System Chart

Dimensions approx.: 50x70 cm

Language as requested



**BT4003.31 KIDNEY ANATOMY MODEL**

Representation of kidney, renal corpuscle and nephron

Made of PVC with Longitudinal section of the kidney, increased 3 times

Nephron and blood vessels, increased 100 times

Renal corpuscle, increased 650 times

On a base



**BT4003.32 HUMAN SKELETON ANATOMY MODEL**

This life-size human skeleton model is an ideal tool for the teaching and study of Human anatomy an Physiology. Comes with metal stand. Model map print-out , plasticized, included.

It is movable and it removable parts make this skeleton model convenient for detailed study of human bone anatomy. Made of durable and washable PVC material . Rolling wheels at the bottom provides easy movement of it.

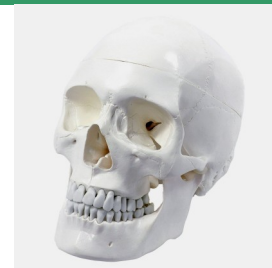
**Features**

- Durable plastic material
- Stand with 5 caster wheels
- Approx. 200 bones
- Height: 180 cm
- Separable skull



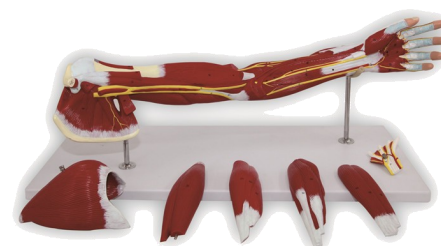
**BT4003.33 HUMAN SKULL**

This life-size adult skull features a movable jaw, cut calvarium, suture lines and 3 removable lower teeth - ncisor, cuspid and molar.  
Dissected into 3 parts. Size: 20x15x15cm.  
Material: PVC



**BT4003.34 ANATOMICAL ARM MUSCELS**

Visible superficial and deep muscles, tendons, vessels, nerves and bone components consisting of 7 parts  
All parts are removable



**BT4003.35 MITOSIS MODELS**

Relief models of 8 phases of mitosis on a stand

Material: PVC

Enlarged 10,000 times

The three-dimensional relief model shows the following 9 phases of mitosis on the basis of a typical mammal cell:

1. Interphase
2. Prophase
3. Early prometaphase
4. Later prometaphase
5. Metaphase
6. Early anaphase
7. Later anaphase
8. Telophase
9. Cytokinesis



**BT4003.36 MEIOSIS MODELS**

Relief models of 10 phases of meiosis stages mounted on a stand

Enlarged 10,000 times

**Stages of Meiosis**

Interphase (stage of G1-phase)

Prophase I (leptotene)

Prophase I (zygotene and pachytene)

Prophase I (diplotene)

Prophase I (diakinesis)

Metaphase I

Anaphase I

Telophase I, cytokinesis I, interkinesis, prophase II and metaphase II

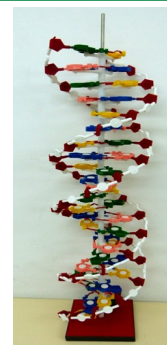
Anaphase II

Telophase II and cytokinesis II



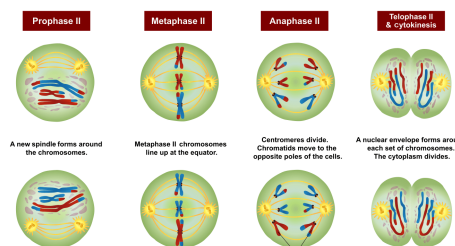
**BT4002.1 DNA MODEL**

22-Layer DNA Model consisting of: i) Nitrogen bases, in particular: Thymine, Adenine, Guanine, Cytosine, ii) Deoxyribose, iii) Phosphatase iv) Connectors, v) a square base of , vi) 2 metal rods, with 42cm height each, connected to each other and joined to the base. The DNA model is a reliable magnification of the DNA structure  
Dimensions: 30x10x10 cm



**BT4003.36A MEIOSIS CHART**

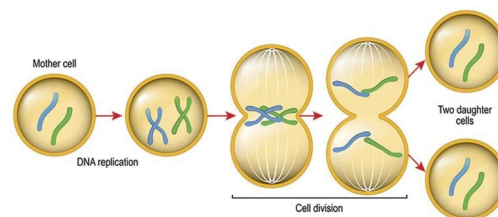
Meiosis phases chart  
Dimensions: 80x120 cm  
Laminated  
Language as requested



**BT4003.35A MITOSIS CHART**

Mitosis stages chart  
Dimensions: 80x120 cm  
Laminated  
Language as requested

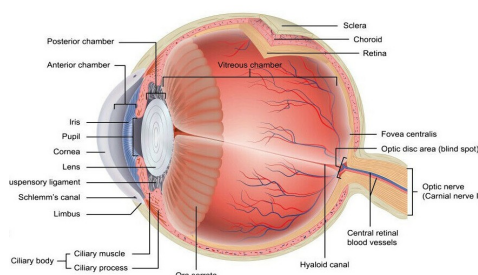
**Mitosis**



**BT4003.2A HUMAN EYE ANATOMY CHART**

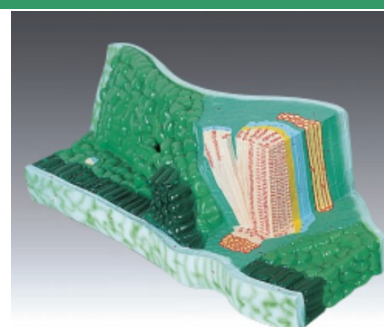
The Eye chart features a prominent cut-away view of the eye, showing major internal and external features of this basic human instrument . It is made durable varnished paper . The chart has 2 wooden bars for wall hanging.

Chart size : 50x70cm  
Language as requested



**BT4003.37 LEAF CROSS - SECTION MODEL**

Model showing the detailed structure of leaf. Features cuticle, upper and lower epidermis, palisade and spongy mesophyll, stomata, guard cell, and vein with xylem and phloem. Magnification 1500 times.  
Dimensions: 30x30x8 cm



**BT4003.38** ROOT PLANT CROSS - SECTION MODEL

The root tip model is a detailed, vibrantly colored 3D mold that effectively shows the inner anatomy and vasculature of a root tip. It is detailed both on the cross-section displaying the inner root tip and on the outside of the root tip -- both the inner anatomy (vasculature, etc.) and the outer anatomy are shown in detail.

Dimensions: 30x30x10cm



**BT4003.39** STEAM CROSS - SECTION MODEL

Cross section of plant stem with visible vascular bundles. The model is a magnified view of the features and anatomy of a plant stem. This standard replica features a cut away look at the inside of a plant stem and the anatomical features of how the plant's different systems work together.

Magnification: 250

Dimensions: 30x7 cm



**BT4003.2** HUMAN EYE MODEL

Eye Anatomy Model , scale 6:1

Realistic model of human eye that identifies cornea, iris, pupil, lens, ciliary muscle, zonules, sclera, choroid, vitreous humor, retina, macula, optic disc and optic nerve. It is assembled on a plastic base with metal axis.

Material: PVC

Eyeball Diameter: 16cm

Model overall Size: 17cmx17cmx25cm

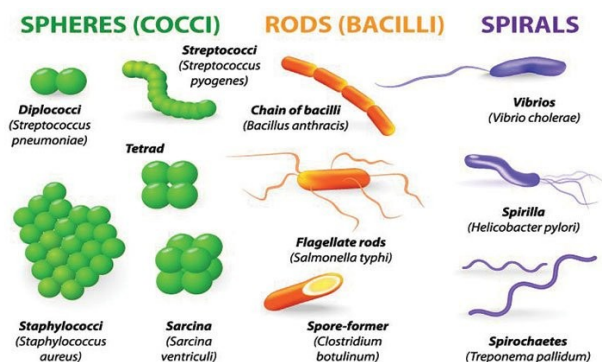


**BT4003.40** BACTERIA CHART

Bacteria categorization chart on wooden rods

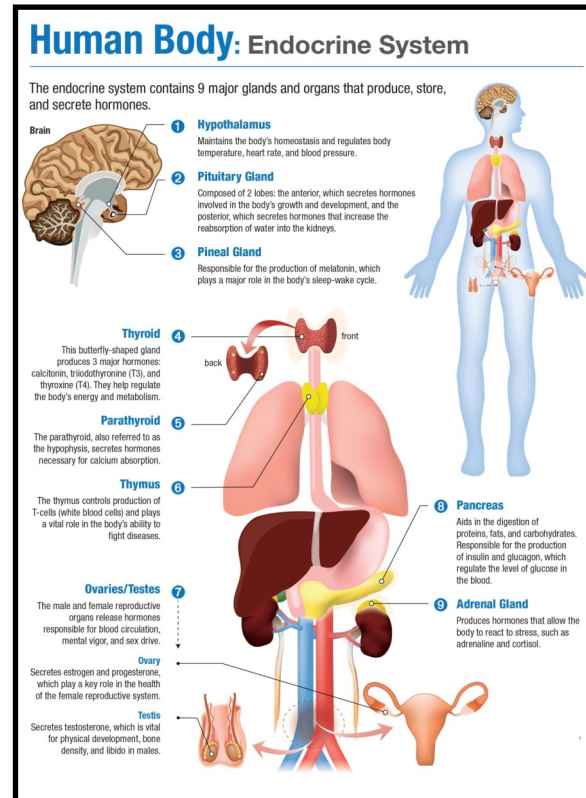
Dimensions approx.: 80x120 cm

Language as requested



**BT4003.41A** ENDOCRINE SYSTEM CHART

Endocrine system  
Anatomy chart  
Poster with Wooden rods  
Dimensions approx.: 80x120 cm  
Printed or any language requested



**BT4003.20** NERVOUS SYSTEM ANATOMY MODEL

Human nervous system relief model  
Size: 80x30x6 cm





**BT4001.11** BTD BINOCULAR STEREO LABORATORY MICROSCOPE

**SPECIFICATIONS**
**Magnification**

10x/20x, 10x/30x, 20x/40x with different two magnification levels

**Zoom Ratio**

1:6.5 Continuous with hand handle knob

**Eyepiece**

High eye-point wide field :  
WF10X/f20mm.

**Objective Lens**

X2 /X6, Pure Copper Objective ,  
Antireflective, Stereoscopic

**Zoom**

Objective: 0.7X- to 4.5X adjustable

**Viewing head**

Compensation binocular head,  
45° inclined, Inter-pupillary distance 55-75mm.

**Diopter**

Both eyepiece tubes diopter adjustable +/- 5

**Stand**

2L pole stand

**Base**

V type pillar base, 175\*235mm

**Illumination**

12v/10w incandescent lamp  
12v/10w halogen lamp  
LED illumination (Rechargeable for option)

**View field**

f5mm-f30mm

**Working Distance**

30mm-160mm

**Focusing system**

V type pillar stand, focusing range 60mm



**BT4001.12 LABORATORY MICROSCOPE**

SPECIFICATIONS

**Microscope Type**

Compound

**Application**

Clinic , Veterinary , Laboratory, Student/School

**Head Type**

Binocular, 360° rotating

**Camera**

None

**Magnifying Type**

Multi-Power

**Magnification Power**

40X to 1000X (Max 2500X)

**Optics**

Achromatic

**Field View**

Widefield

**Objective Power**

4x / 0.10, 10x / 0.25, 40x /0.65, 100x / 1.25

**Eyepiece Power**

10X / 25X

**Eyepiece Size**

23mm

**Stage**

Two-layer Mechanical Stage, 130×130 mm

**Lighting Configuration**

Transmitted (Bottom)

**Light Type**

LED

**Light Power**

1W

**Light Shape**

Built-in

**Number of Light Bulbs**

1



**Condenser**

Abbe-Spiral w/ diaphragm

**Condenser Type**

Brightfield

**Condenser Optics**

NA 1.25

**Iris**

With Iris

**Power Supply**

110V, 220V

**BT4001.13 BINOCULAR LABORATORY MICROSCOPE**

## SPECIFICATIONS

**Optical System**

Finite Optical System 160mm

**Viewing Head**

Seidentopf Binocular Viewing Head , Inclined at 30°, interpupillary 48mm-75mm, 360° rotating

**Eyepiece**

Wide field eyepiece WF 20X/11mm

**Objective**

Finite 195 Series Achromatic 4X 10X 40Xs 100Xs(oil)

**Nosepiece**

Forward Quadruple Nosepiece  
Forward Quintuple Nosepiece

**Condenser**

Abbe Condenser NA1.25 with Diaphragm

**Focusing System**

Coaxial Coarse and Fine Adjustment, Fine Division 0.002mm, Coarse Stroke 36mm

**Stage**

Double Layer Mechanical Stage 155x142mm,  
Moving Range 75mmx50mm

**Illumination**

External Illumination, 3W/LED

**Product single size**

30x20x38cm



## BT4001.14 TRINOCULAR LABORATORY MICROSCOPE

### SPECIFICATIONS

#### Optical System

Finite Optical System 160mm

#### Viewing Head

Seidentopf Trinocular Head, Inclined at 30°, 360° rotating, Interpupillary 48mm-75mm

#### Eyepiece

Wide field eyepiece WF 10X/18mm  
Wide field eyepiece WF 16X/11mm  
Wide field eyepiece WF 20X/11mm

#### Objective

Finite 195 Series Achromatic 4X 10X 40Xs 100Xs(oil)

#### Nosepiece

Forward Quadruple Nosepiece  
Forward Quintuple Nosepiece

#### Condenser

Abbe Condenser NA1.25 with Diaphragm

#### Focusing System

Coaxial Coarse and Fine Adjustment, Fine Division 0.002mm, Coarse Stroke 36mm

#### Stage

Double Layer Mechanical Stage 155x142mm, Moving Range 75mmx50mm

#### Illumination

External Illumination, 3W/LED with brightness control

#### Product single size

30x20x38cm



**BT4001.15 LCD DIGITAL MICROSCOPE**

SPECIFICATIONS

**Optical magnification**

40X-1000X

**Viewing head**

Compensation Binocular head, 30° inclined, 360° rotatable, interpupillary distance 48-75mm

**Eyepiece**

Wide-field WF10X/18mm

**Objective**

195N Achromatic objective 4x / 0.10, 10x / 0.25, 40x / 0.65 (spring), 100x / 1.25 (spring, oil )

**Nosepiece**

Four holes revolving nosepiece, steel ball positioning

**Stage**

Double-layer mechanical stage  
Size 125×115mm, moving range 76×52mm

**Focusing mechanism**

Coaxial coarse and fine adjustment, coarse adjustment 20mm, fine adjustment 0.002mm

**Condenser**

Abbe condenser, N.A.=1.25, iris diaphragm, handwheel lift up and down

**Light source**

LED 3W, brightness adjustable

**Power source**

External switching power supply, AC100-240V

**Display**

9.7-inch high-resolution color LCD with 5-point touch

**Screen Chip**

5 million color CMOS

**Chip size**

1/2.5 inch



**Effective Pixels**

2048\*1536@15FPS

**Display resolution**

2048\*1536 touch screen

**Operating system**

Android system

**Cell size**

2.2\*2.2µm Power supply: DC-12V/1A

**Language**

Support English and any requested language

**Software**

Image Analysis and Measurement software

**Storage function**

1 photo recording Dynamic contrast, SD card formatting

**Accessories:**

DC-12V power supply

**Output**

Support HDMI HD interface, USB2.0, Mini USB

**BT 4001.1AX MICROSCOPE ACCESSORIES**

- BT 4001.1AX1 Eyepiece with micrometric scale, WF10x/18, 10mm/100um – 2 pieces
- BT 4001.1AX2 Micrometric slide, 10mm/100div – 2 pieces
- BT 4001.1AX3 Immersion oil 10 ml



**BS4010.131 MICROSCOPE CAMERA**

**SPECIFICATIONS**

<b>Capture Mode</b>	Picture and Video
<b>Active pixels</b>	1280*1024
<b>Resolution</b>	1.3 Mp
<b>Responsivity</b>	1.0V/ lux-sec
<b>Dynamic Range</b>	71dB
<b>S/N Ratio</b>	44dB
<b>Spectral Range</b>	400-650nm(with IR-filter)
<b>Frame Rate</b>	17fps@1280*1024
<b>Preview Model</b>	1280x1024, 1280x800, 1024x768, 800x600, 640x480, 352x288, 320x240, 640x480, 352x288, 320x240
<b>Exposure</b>	ERS or Manual
<b>Power Consumption</b>	190mW
<b>Eyepiece Adapter Size</b>	23.2mm, 30.0mm
<b>Power Supply</b>	USB Powered
<b>Device Weight</b>	0.32kg



<b>Device Size</b>	Φ 74.00mm*97.00mm
<b>Cable length</b>	1.5m
<b>Functions</b>	Image & video Capture, Edit and Management
<b>PC Requirements</b>	CPU: Inter Core2, 2.8GHz or Higher; Memory: 2GB or More; USB Port: USB2.0 High-speed

**BS4010.132 MICROSCOPE CAMERA**

Standard digital C-Mount camera with:

- Aptina CMOS sensor
- 5,1Mp
- Hardware resolution among 0.35M to 14M
- Integrated zinc aluminum alloy housing
- USB2.0 interface ensuring high speed data transmission
- Ultra-Fine color engine with perfect color reproduction capability
- Advanced video & image processing application ToupView
- Providing Windows/Linux/OSX multiple platform SDK
- Accessories: Eyepiece tube and cables



Sensor and Size	Pixel(μm)	G Sensitivity Dynamic Range SN Ratio	FPS/ Resolution	Binning	Exposure
1/2.5"(5.70x4.28)	2.2x2.2	0.53 V/lux-sec 66.5dB 40.5dB	2592x1944	1x1, 2x2, 4x4	0.294ms-2000ms

**BT4001.8A DISSECTING SET**

Dissecting set of 12 stainless steel basic anatomical tools, scissors, forceps, needles, scalpels  
All of the above are packaged in a protective case.



**BT4001.41 PLANT ANATOMY MICROSCOPE PREPARED SLIDES**

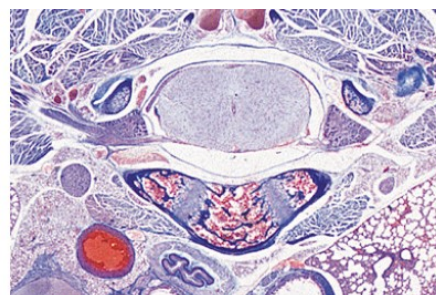
Set of 12 prepared slides  
Ideal for teaching Plant structure in Biology  
High quality, Clear images  
Labeled and colored surfaces  
Plant icon printed on the slide  
Packed in carton box with slide inserts  
Size 6.25 x 2.15 x 0.15 cm

- 1 Carnation Stem
- 2 Pine tree stem
- 3 Lilly pollen
- 4 Camelia pollen
- 5 Tulip pollen
- 6 Sunflower pollen
- 7 Dandelion fuzz
- 8 bamboo cane
- 9 Leaf Veins
- 10 Laver stem
- 11 Phox leaf
- 12 Agar



**BT4001.42 NERVOUS SYSTEM MICROSCOPE SLIDES**

- Nervous system  
10 slides
- 1(e). Cerebrum, human, cortex, t.s.
  - 2(e). Cerebellum, human, t.s.
  - 3(f). Cerebellum, human, t.s., Weigert stained
  - 4(e). Spinal cord, human, t.s. for general structure
  - 5(e). Nerve, human, l.s.
  - 6(e). Nerve, human, t.s.
  - 7(f). Spinal cord, cat, t.s., Klÿver-Barrera stained
  - 8(e). Spinal cord, cow, t.s., Nissl stained
  - 9(f). Cerebrum, cat, t.s., Golgi stained
  - 10(e). Brain, rat, median l.s.
  - 11 (d). Vertebra with spinal cord, rat, t.s.



**BT4001.43 HUMAN HISTOLOGY MICROSCOPE PREPARED SLIDES**

A set of 50 educational histology ,thin section prepared microscope slides, color accurate with clear and complete characteristics of the structure and morphology of the tissues under microscope. Specimen are provided from histological samples ,through special processing . Ideal set for scientific teaching human histology / Slides include specimens from a variety of histological specimens from human organ tissues with clear bounds and original shape, color and form.

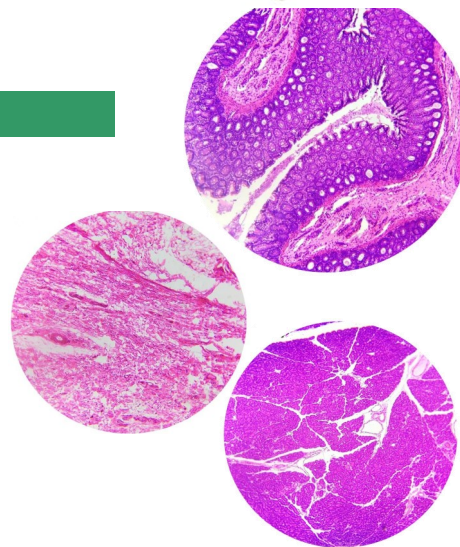
The slides are packed in plastic or wooden box with slide inserts.

All slides are labeled.

Slide size : 25.4 x 76.2 x 1.2 mm

**SLIDE CONTENT**

- |   |                          |                        |
|---|--------------------------|------------------------|
| 1 Simple columnar epithelium                | 21 Large artery ,sec     |                        |
| 2 Stratified pavement epithelium            | 22 Vena cava section     |                        |
| 3 Simple cuboidal epithelium                | 23 Spleen ,sec.          |                        |
| 4 Human blood s.m                           | 24 Thymus,sec.           |                        |
| 5 Bone marrow s.m                           | 25 Tonsil,sec.           |                        |
| 6 Loose connective tissue                   | 26 Thyroid ,sec.         |                        |
| 7 Adipose tissue                            | 27 Epithelial body       |                        |
| 8 Hyaline cartilage                         | 28 Adrenal gland ,sec    |                        |
| 9 Fibro cartilage                           | 29 Tongue ,i.s           |                        |
| 10 Elastic cartilage                        | 30 Esophagus ,c.s        |                        |
| 11 Human skin section through sweat gland   | 31 Stomach wall,sec      | 41 Testis ,sec.        |
| 12 Human skin section through hair follicle | 32 Small intestine ,c.s  | 42 Epididymis ,sec.    |
| 13 Separation mounting of smooth muscle     | 33 Colon ,sec.           | 43 Deferent duct ,c.s  |
| 14 Smooth muscle ,c.s. and long section     | 34 Appendix ,sec.        | 44 Ovaries ,sec.       |
| 15 Separation mounting of skeletal muscle   | 35 Salivary gland ,sec.  | 45 Womb ,sec.          |
| 16 Cardiac muscle ,sec. (hematine)          | 36 Liver,sec.            | 46 Fallopian tube ,c.s |
| 17 Feeler body                              | 37 Lung ,c.s             | 47 Nerve bundle ,sec.  |
| 18 Cerebrum, sec.                           | 38 Kidney,sec.           | 48 Placenta,sec.       |
| 19 Cerebellum ,sec.                         | 39 Trachea,c.s.          | 49 Pituitary ,sec.     |
| 20 Heart sec.                               | 40 Metanephric duct ,c.s | 50 Cervix sec.         |





**BT4001.44 MITOSIS AND MEIOSIS SLIDE SET**

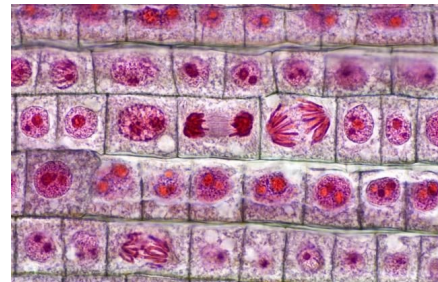
17 slides of meiosis and Mitosis Prepared Slides Set

**12pcs Meiosis Prepared Slides**

- 1 leptotene
- 2 zygotene
- 3 pachytene
- 4 prophase I
- 5 diakinesis
- 6 metaphase I
- 7 anaphase I
- 8 telophase I
- 9 prophase II
- 10 metaphase II
- 11 anaphase II
- 12 telophase II

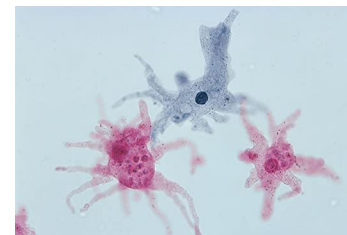
**Mitosis set of five,**

- 1. Anaphase
- 2. Metaphase
- 3. Prophase
- 4. Telophase
- 5. Interphase



**BT4001.45 SINGLE-CELLED ORGANISMS SLIDE SET**

10 Microscope slides set of Single-celled organisms



**BT4001.21 CAVITY SLIDES**

Bevelled glass slide with two cavities  
Pack of 10 pieces  
Dimensions: 75 x 25mm



**BT4001.2 MICROSCOPE SLIDE PACK**

A set of 50 slides for microscopic observations, placed in vacuum packaging, size 25x 76x1 mm. The edges of the glass are smoothed to ensure the safety of the user. Made of pure, colorless, silicate glass with a refractive index of 20°, resistant to acids and bases, without scratches and streaks.



**BT 4001.3 COVER GLASSES MICROSCOPE AUXILIARIES**

Set of **100 square cover glasses** in plastic packaging, 18x18mm surface and 0,13 - 0,17 mm thickness forming a round cavity. Cover glasses are made of high-quality silica glass, according to the international standards. The coating of the glass is completely transparent allowing the clear observation of the samples. Cover glasses are resistant to chemicals and clear of scratches and streaks.



**BT 4001.81 DISSECTION NEEDLE**

Pointed  
Stainless steel  
Total length: 150 mm



**BT 4001.83 SCISSORS**

Stainless steel  
Straight  
Length: 100mm



**BT 4001.8V GERMINATION CABINET**

**Germination of seeds and pelleted seeds**

- Exceptionally suited for all types of testing with seed germination
- Germination on potting soil.
- Certain dimming options using only LED lighting
- Safety thermostats for both high and low temperatures
- The cooling system uses a direct expansion compressor
- User-friendly electronic
- One door, three layers of hollow glass, stainless steel tank, with a lock



Volume (L)	Temperature Range (°C)	Temperature Precision (°C)	Humidity Range (%RH)	Luminosity (LUX)	Number of Layers
250	0~50	0.5	30-95±2	12000	4